

CERTIFICATE

OF APPRECIATION

ICAE International
Conference on
Applied
Engineering



IEEE **CSS** **RA**
IEEE Indonesia CSS/RAS Joint Chapter

THIS CERTIFICATE IS PRESENTED TO

Miratul Khusna Mufida and Dwi Kartikasari

as **Participant(s)**
of the **International Conference on Applied Engineering 2018**

Batam, Indonesia
October 3rd - 4th, 2018



Daniel S. Pamungkas, Ph.D
Chair of ICAE





Featured Product Mapping in Hinterland Karimun Area Using Interactive Visualization

Mir'atul Khusna Mufida | Dwi Kartikasari



Overview

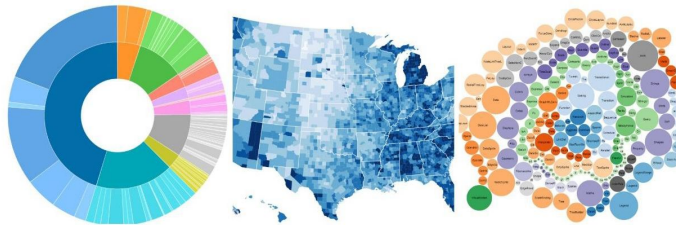
- Introduction
- State of the art
- Methodology
- Experimental Result
- Conclusion

State of the Art

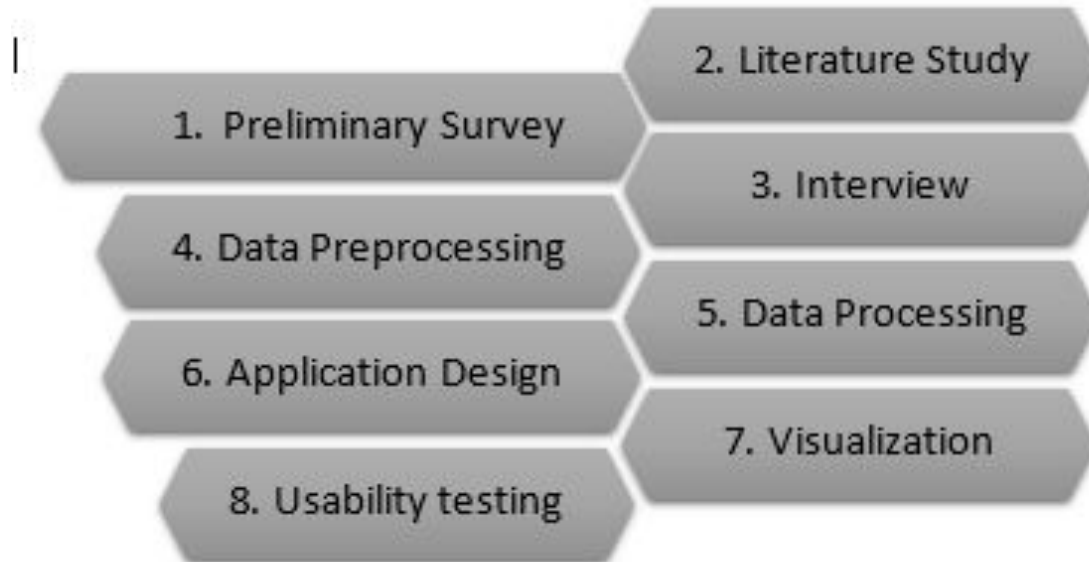
1 **Hinterland**

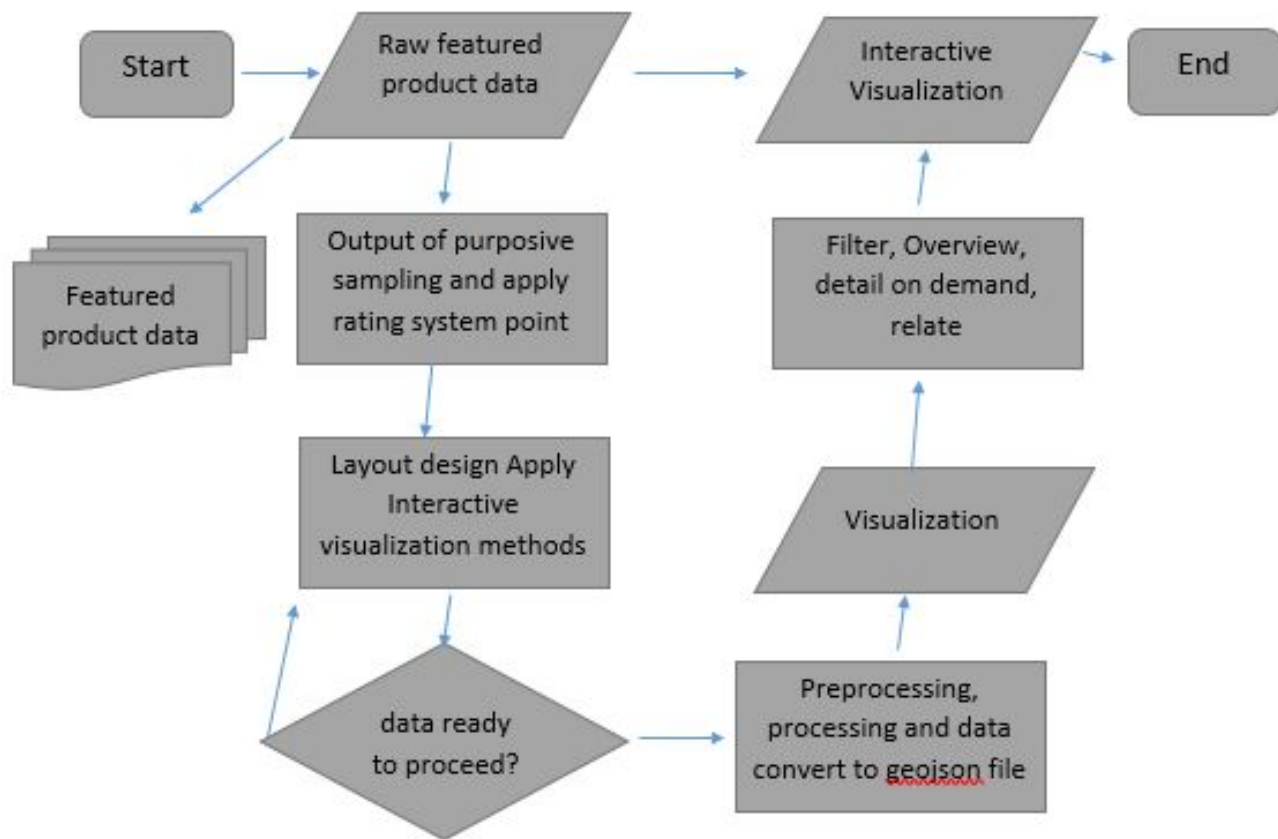
2 **Featured Product**
The potential product in Karimun

3 **Interactive Visualization**
Overview, Zoom and Filter, Detail on Demand,
Relate, History

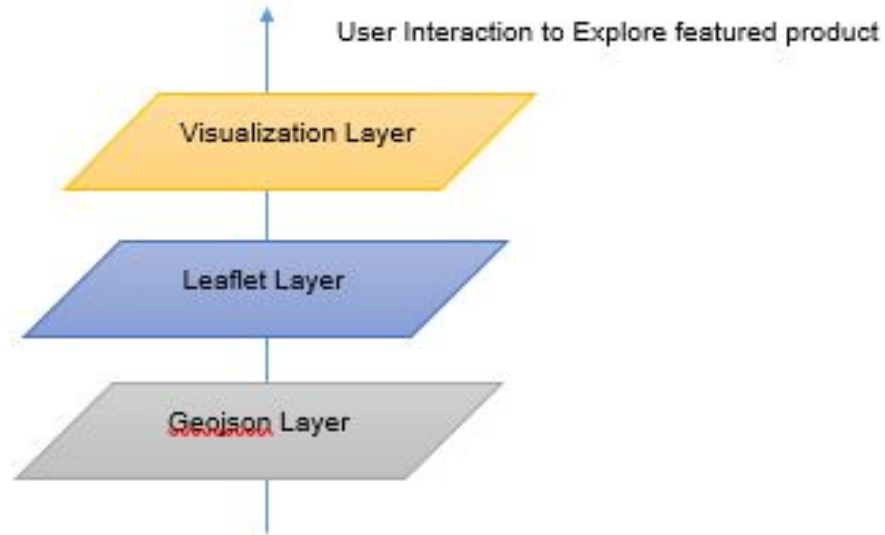


Methodology





Interactive Visualization Design



Experimental Result

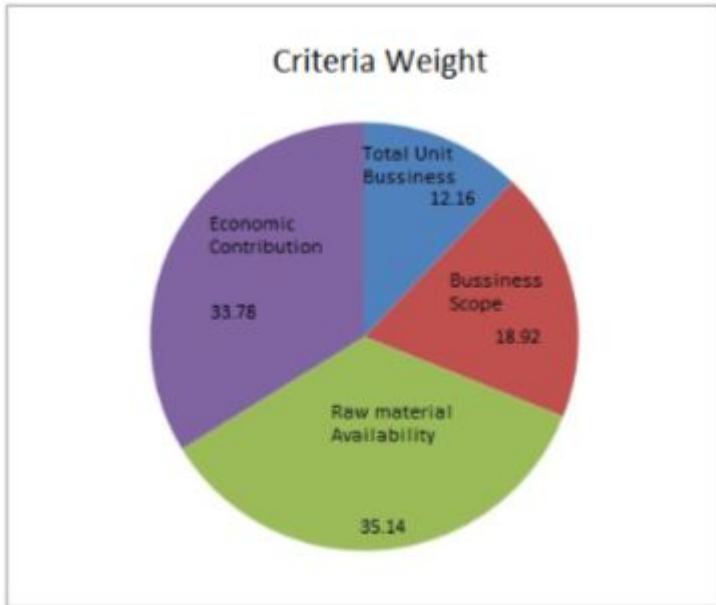


TABLE I
PRODUCT IDENTIFICATION IN JANG VILLAGE

Product	R1	R2	R3	R4	R5	R6	R7
raw crackers	V	V	V	V	V	V	V
Fried crackers (atom)	V	V	V	V	V	V	V
Mackarel			V		V	V	V
Memparang			V		V	V	V
Gerut			V		V	V	V
Kale				V		V	
Chili				V			
Sugar cane	V						

TABLE II
CRITERIA WEIGHT

Criteria	Average (R1-R7)	Weight	Ranking
Unit Buss	1,29	12,16	4
Marketing	2,00	18,92	3
Material	3,71	35,14	1
Economic Inf	3,57	33,78	2
Total	10,57	100,0	

Experimental Result {Cont}

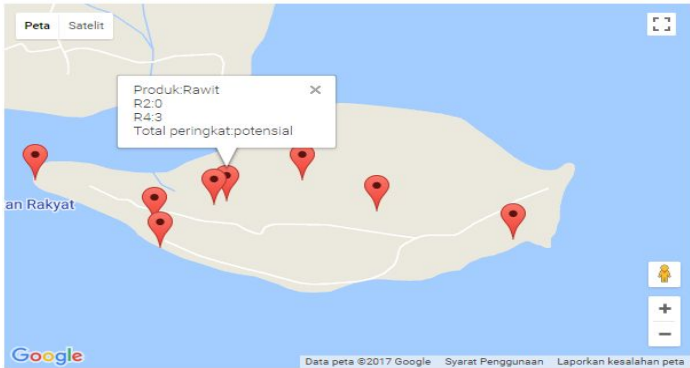
TABLE V
RANKING BASED ON THE RESPONDENT

Product	RC	FC	M	T	G	K
Unit Buss	4	3	2	2	2	1
Marketing	3	3	2	2	2	1
Material	3	3	2	2	3	1
Economic Inf	2	3	3	3	3	1
Last Score	278,38	300,00	233,78	233,78	268,92	100,00

TABLE VI
FEATURED AND POTENTIAL PRODUCT RANKING

Product	Score	Status and Ranking
	Analysis	
Raw Snack	269,5	Produk Unggulan Juara 2
Snack	283,4	Produk Unggulan Juara 1
Mackarel	233,8	Produk Potensial
Memparang Fish	233,8	Produk Potensial
Gerut Fish	251,4	Produk Potensial
Kale	100,0	Produk Potensial
Chilli	100,0	Produk Potensial
Sugar Cane	100,0	Produk Potensial

Map Visualization



Conclusion & Future Works

1. This research result identification of featured product in Karimun: fried crackers (atoms) followed by raw crackers, while potential products were Mackerel Fish, Mengarang Fish, Gerut Fish, Kale, Chili and Sugar Cane.
2. The outcome of this research identification and mapping study of featured products and potential products in the hinterland area will contribute to the acknowledgement of the economic potential of the hinterland region in the future by performing interactive visualization in the web application to figure out potential product in the area.
3. Ranking of the products identified through the point rating system method.
4. This research successfully mapped featured products and potential products into online maps by applying interactive visualization methods.

Conclusion & Future Works {cont}

5. The advantage of this research also realize possibility to blend research cross discipline, especially for students majoring in Informatics Engineering and Business Management majors, the results of the study can be used to find out the form of join research at State Polytechnic of Batam.
6. Entrepreneurs, prospective investors or the wider community. Research results can be used by potential investors to find production centers for the products they need online applying visual data exploration using web based application.
7. The results of this study can add to the collection of the results of appropriate technology research and become the basis for community development activities in the hinterland region in the future.
8. This research can guide and direct in the context of more detailed research as part of advanced research in the field of engineering.
9. But there are some limitations based on the result of the application development and testing, that is the process of collecting and determining geospatial points is still done manually, preferably in future research, it can use point determination automatically and can implement automatic data preprocessing as well.